

# A Gobelin-Stitch Project Inspired by Something from Her Hands

DESIGNED AND STITCHED BY ANNA-MARIE WINTER



**Purse from the Minerva Sêrbu  
Petrascu Collection.**

**5½ x 6¼ inches (14.0 x 15.9 cm).**

*Purse courtesy of Evelyn Jonescu, Regina,  
Saskatchewan, Canada. Antique brass box  
and needlecase courtesy of Loene McIntyre,  
Fort Collins, Colorado. Photograph by  
Joe Coca.*



This project was inspired by a small, intricately worked Gobelin-stitch purse from the Sêrbu Collection shown with our project here and being carried by Aurelia Sêrbu in the photograph on page 22. Originally worked with fine wool and metal threads, this contemporary interpretation is worked in rich spun silk complemented by sparkling metallic threads. The design may be framed or set into the lid of a box to hold your treasured sewing tools.

#### MATERIALS

Zweigart Congress Cloth, 3990/100/50, 24-count 100% cotton fabric, White, 1 piece 10 × 10 inches (25.4 × 25.4 cm)

Kreinek Silk Mori, 100% silk 6-strand thread, 5½ yards (5 m)/skein, 1 skein #1203 Light Victorian Rose; 2 skeins #4074 Medium Dusty Green

Kreinek Silk Mori Milkpaint, 100% silk 6-strand thread, 5½ yards (5 m)/ skein, 1 skein each #0116 Very Dark Lenten Rose and #0434 Medium Moss Green; 3 skeins #0115 Dark Lenten Rose

Kreinek Tapestry (#12) Braid, 11 yards (10 m)/spool, #002 Gold, 1 spool

John James Needles, tapestry sizes 24 and 26 Stretcher bars, 10 × 10 inches (25.4 × 25.4 cm) Laying tool

**Finished size:** 4¾ × 4¾ inches (12.4 × 12.4 cm)

#### INSTRUCTIONS

Find and mark the center of the fabric. Mount the fabric onto the stretcher bars using tacks or staples; make sure the fabric is tightly stretched.

Use a laying tool to keep the strands of silk separated and untwisted as you work. Pairs of upright Gobelin stitches are used throughout the design, with each pair varying in length from 2 to 14 fabric threads. To keep the laid silk thread from being dislodged by the metallic braid, always work from a clean or unfilled fabric hole into a filled hole, i.e., bring the needle up from the reverse side of the fabric in a clean hole, then insert the needle into a filled one as you bring the thread back down to the reverse side of the fabric.

Using the size 24 needle, begin stitching the four large diamond-shaped motifs that form the center of the design. First, work the small pairs of Gobelin stitches that border the lower diamond along the top edge, using four strands of #0116 to create a slightly higher texture. Once the small border has been completed, work the

upper half of the diamond first, then continue the pattern for the lower half. Follow the chart and the color key for color placement and number of strands.

Complete the remaining diamonds in the same manner, rotating the canvas as necessary. Work the remaining border following the chart and color key.

Using a single strand of #0116 and the size 26 needle, complete the project by adding small horizontal stitches between the pairs of stitches forming the narrow border around the diamonds. These small stitches will mask the canvas that shows through and add additional texture to the border.

#### FINISHING

Frame or use as an inset for the lid of a wooden box.

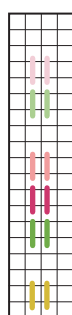
#### SUPPLIERS

*Congress cloth.* Zweigart Fabrics, 2 Riverview Dr., Somerset, NJ 08873-1130; (732) 271-1949; [www.zweigart.com](http://www.zweigart.com).

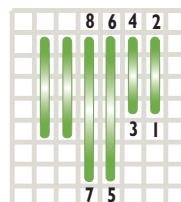
*Tapestry Braid, Silk Mori, and Silk Mori Milkpaint threads.* Kreinek Mfg. Corp., 3106 Lord Baltimore Dr., Ste. 101, Baltimore, MD 21244; (410) 281-0040; [www.kreinek.com](http://www.kreinek.com).

*John James needles.* The Colonial Needle Co., 74 Westmoreland Ave., White Plains, NY 10606; (914) 946-7474; [www.colonialneedle.com](http://www.colonialneedle.com).

#### Key



- Kreinek Silk Mori**  
 1203—Light Victorian Rose (3 strands)  
 4074—Medium Dusty Green (3 strands)  
**Silk Mori Milkpaint**  
 0115—Dark Lenten Rose (4 strands)  
 0116—Very Dark Lenten Rose (3 strands)  
 0434—Medium Moss Green (3 strands)  
**Tapestry Braid**  
 002—Gold



**Upright Gobelin stitch**

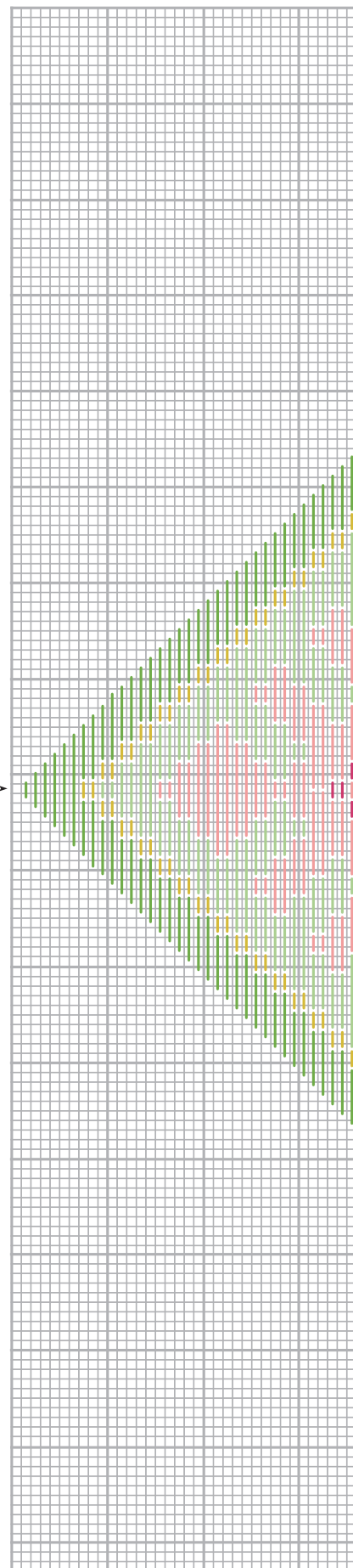
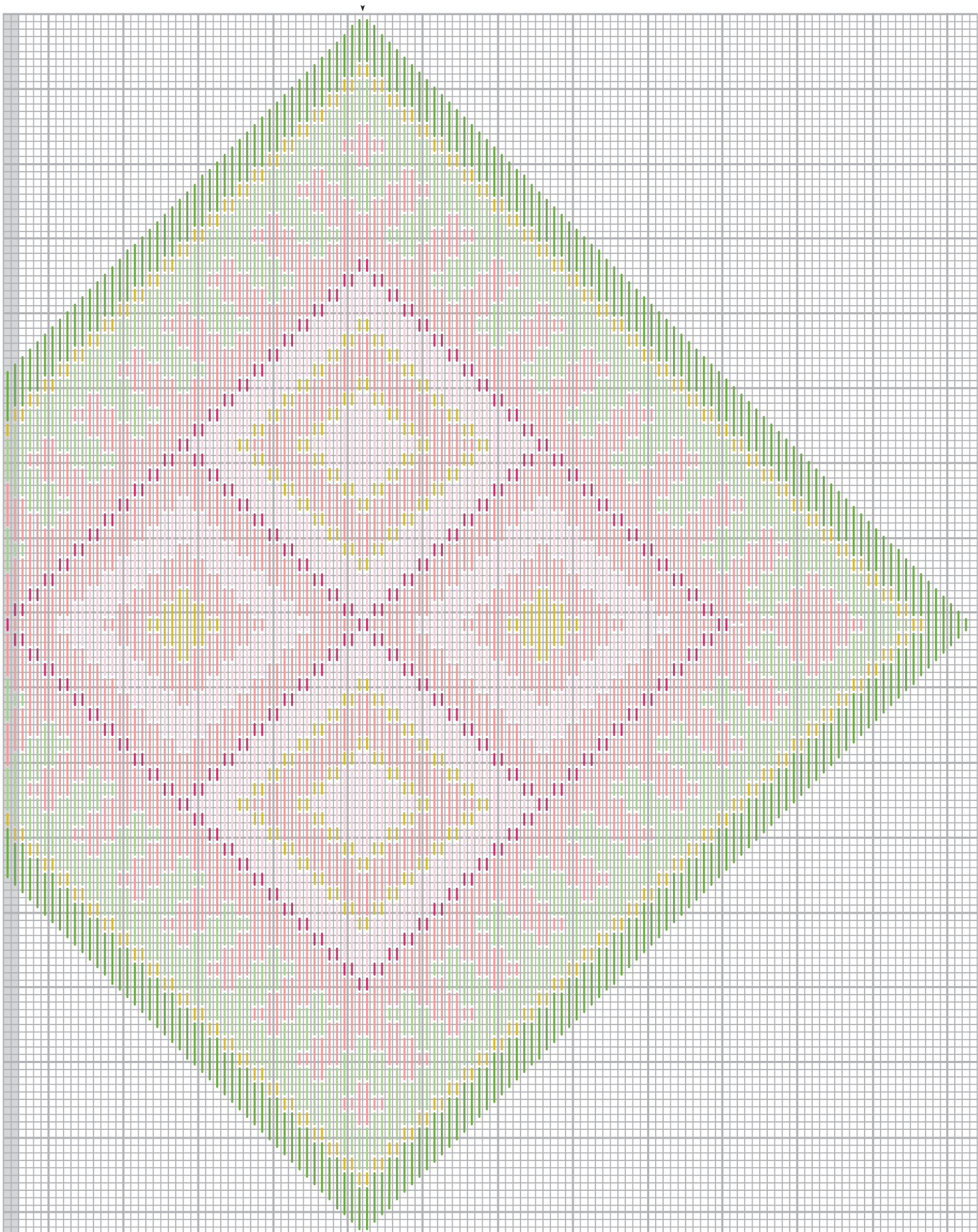


Chart may be photocopied for personal use.



Do not stitch rows in gray.